

Noder til 30 af FalkeØje's sange

1. Jorden er skøn

$\text{♩} = 122$
3:18

(A)

Handwritten musical notation for system A, first staff. It features a treble clef, a key signature of one sharp (F#), and a 3/4 time signature. The melody consists of eighth and quarter notes. Chords E, f#m, H7, and E are indicated above the staff.

(B)

Handwritten musical notation for system B, first and second staves. The first staff continues the melody with chords E, f#m, H7, and E. The second staff provides a bass line with chords E, f#m, H7, and E.

(C)

Handwritten musical notation for system C, first and second staves. The first staff continues the melody with chords E, H7, and E. The second staff provides a bass line with chords H7 and E.

(D)

Handwritten musical notation for system D, first, second, and third staves. The first staff continues the melody with chords E, A, and E. The second staff provides a bass line with chords E, A, and E. The third staff provides a bass line with chords A, E, H7, and E.

2. Glade tosser

♩ = 155
3:24

(A)

(B)

(C)

(D)

$\text{♩} = 155$
3:50

3. Vilde rose (1)

$\text{♩} = 160$
3:27

(A)

Handwritten musical score for section A, consisting of four staves. The first staff begins with a treble clef, a common time signature 'C', and a key signature of one flat. The melody is written in eighth notes. Chords are indicated above the staff: C, F C, F. The second staff continues the melody with chords C, F C, G7. The third staff continues with chords C, F C, F. The fourth staff concludes the section with chords C, F C, G7, and C.

(B)

Handwritten musical score for section B, consisting of three staves. The first staff begins with a treble clef, a common time signature 'C', and a key signature of one flat. The melody is written in eighth notes. Chords are indicated above the staff: C, F C, F. The second staff continues the melody with chords C, F C, G7. The third staff concludes the section with chords C, dm, G7, and C.

(C)

Handwritten musical score for section C, consisting of three staves. The first staff begins with a treble clef, a common time signature 'C', and a key signature of one flat. The melody is written in eighth notes. Chords are indicated above the staff: C, F C, F. The second staff continues the melody with chords C, F C, F. The third staff concludes the section with chords C, dm, G7, and C.

3. Vilde rose (2)



(D)



$\text{♩} = 145$
4:10

4. Det er os, der skal

$\text{♩} = 170$
3:21

(A)

Handwritten musical notation for section A, measures 1-4. The notation is on four staves. The first staff has a treble clef, a key signature of one sharp (F#), and a 4/4 time signature. The melody starts with a quarter note G, followed by eighth notes A, B, C, D, E, F#, G. The second staff continues the melody with a quarter note G, followed by eighth notes A, B, C, D, E, F#, G. The third staff continues with a quarter note G, followed by eighth notes A, B, C, D, E, F#, G. The fourth staff continues with a quarter note D7, followed by eighth notes A, B, C, D, E, F#, G.

(B)

Handwritten musical notation for section B, measures 5-8. The notation is on four staves. The first staff has a treble clef, a key signature of one sharp (F#), and a 4/4 time signature. The melody starts with a quarter note G, followed by eighth notes A, B, C, D, E, F#, G. The second staff continues the melody with a quarter note G, followed by eighth notes A, B, C, D, E, F#, G. The third staff continues with a quarter note G, followed by eighth notes A, B, C, D, E, F#, G. The fourth staff continues with a quarter note G, followed by eighth notes A, B, C, D, E, F#, G.

(C)

Handwritten musical notation for section C, measures 9-12. The notation is on four staves. The first staff has a treble clef, a key signature of one sharp (F#), and a 4/4 time signature. The melody starts with a quarter note G, followed by eighth notes A, B, C, D, E, F#, G. The second staff continues the melody with a quarter note G, followed by eighth notes A, B, C, D, E, F#, G. The third staff continues with a quarter note G, followed by eighth notes A, B, C, D, E, F#, G. The fourth staff continues with a quarter note G, followed by eighth notes A, B, C, D, E, F#, G.

5. Rotlerøset

$\downarrow = 152$
3:12

(A)

(B)

(C)

(D)

(E)

6. skal mit barn vokse op?

$\text{♩} = 165$
3:29

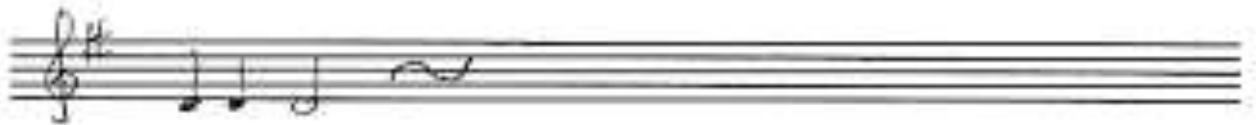
(A)

Handwritten musical score for section A, consisting of four staves. The first staff is the melody in G major. The second and fourth staves are the bass line with chords G, D7, and G. The third staff is the bass line with chords C, G, C, and G.

(B)

Handwritten musical score for section B, consisting of four staves. The first staff is the melody in G major. The second and fourth staves are the bass line with chords G, D7, and G. The third staff is the bass line with chords C, G, D7, and G.

6. skal mit barn vokse op? (2)



(C)



(D)



♩ = 145
4:02

7. Flyv

♩ = 178
3:28

(A)

(B)

(C)

8. Mägerna

♩ = 165
3:24

(A)

(B)

(C)

(D)

9. Makeup

$\text{♩} = 135$

3:07

(A)

Handwritten musical notation for section A, consisting of four staves. The first staff has a treble clef and a C chord above it. The second staff has a G7 chord above it. The third staff has an F chord above it. The fourth staff has a dm chord above it. The music consists of eighth and sixteenth notes with some beaming and slurs.

(B)

Handwritten musical notation for section B, consisting of four staves. The first staff has a C chord above it. The second staff has an E chord above it. The third staff has a C chord above it. The fourth staff has an E chord above it. The music consists of quarter and eighth notes with some beaming and slurs.

(C)

Handwritten musical notation for section C, consisting of one staff. The music starts with an am chord above it. The music consists of eighth and sixteenth notes with some beaming and slurs.

Optræde alene

Oftede nedsætter jeg sangenes tempo – og tilføjer mere skuespil og spontanitet. Det kan være følgende:

Temposkift

Når jeg synger en strofe med sørgelig indhold, nedsætter jeg tempoet i en linje - og falder i næste linje ind i det oprindelige tempo. Hvis strofen er glad, sættes tempoet op i linjen, og falder ind i det oprindelige tempo i næste linje.

Tonehøjde

Hvis teksten er hysterisk, kan min stemme gå lidt op over tonehøjden – og hvis teksten handler om angst, kan stemmen gå lidt under.

Før og efter

Hvis der er følelsesmæssige kraftfulde indfald, kan jeg komme en 16-del før eller efter første taktslag.

Stemning og følelse

Min umiddelbare følelse og stemning (også publikums) bestemmer, hvordan den enkelte linje synges og spilles. Der kan opstå spontane pause mm – eventuel med gråd eller grin – eller råb og hvisken.

Levende musik

Jeg stræber efter at være spontan, sådan at en sang/melodi spilles forskelligt fra gang til gang.

Optræde sammen med andre musikere

Jeg kan godt lide, at sangene bliver sådan, at publikum enten står og svajer, danser, hopper mm. Jeg har brug for en basspiller, der holder tempoet, mens jeg er lidt mere flagrende. Og jeg vil også gerne have en musiker, der noget med- og modspil, anden stemme osv.

Jeg har lavet hæfter med tekster, becifringer og noder samt udskrifter af de enkelte sange, så andre kan øve sig. Jeg har også indspillet sangene, så man kan høre melodierne.

Vi behøver ikke øve så meget sammen. Det må gerne være uperfekt og forskelligt fra gang til gang. Og det gør ikke noget, hvis der opstår fejl eller forkerte akkorder. Det gør det mere levende og giver "skæve" rytmer og klange.

Det vil være rigtig godt, hvis jeg kan udfolde mig, ligesom når jeg optræder alene.

157/142
3:29

10. Flucht (a)

$\text{♩} = 157$
3:28

(A)

Handwritten musical notation for section A, measures 1-4. It consists of four staves. The first staff has a treble clef and a common time signature 'C'. The second staff has a bass clef. Chords are written above the staves: C, F, C, G7, F, C, G7, C.

(B)

Handwritten musical notation for section B, measures 5-8. It consists of two staves. The first staff has a treble clef and a common time signature 'C'. The second staff has a bass clef. Chords are written above the staves: F, C, F, G7, C, G7, C. A handwritten note "1/2 tempo" is written to the right of the second staff.

(C)

Handwritten musical notation for section C, measures 9-12. It consists of four staves. The first staff has a treble clef and a common time signature 'C'. The second staff has a bass clef. Chords are written above the staves: am, dm, F, G7, C, F, C, dm, G7, C.

10. Flugt (2)

(D)

am G7

(E)

am G7 rit

(F)

C G7 C G7 C

(P)

C G7 C

11. Grisen's skabne sang

$\text{♩} = 149$
3/8 12

(A)

Handwritten musical notation for section A, consisting of two staves. The first staff has a treble clef and the second has a bass clef. Chords are written above the staves: C, dm, G7, C. The melody consists of eighth and sixteenth notes.

(B)

Handwritten musical notation for section B, consisting of three staves. The first staff has a treble clef and the second has a bass clef. Chords are written above the staves: E, am, E, am. The third staff has a bass clef and contains the text "sidste linje:" followed by a melodic line with a "rit" marking and a "D7" chord. A yellow highlight is present under a note in the third staff.

(C)

Handwritten musical notation for section C, consisting of two staves. The first staff has a treble clef and the second has a bass clef. Chords are written above the staves: am, C, G7, C. The melody consists of quarter and eighth notes.

12, Frw Hansen

$\text{♩} = 178$
3:29

(A)

Musical notation for section A, measures 1-4. Treble clef, G major key signature. Chords: G, C, G, D7.

(B)

Musical notation for section B, measures 1-4. Treble clef, G major key signature. Chords: C, G7, G, C, C7, G.

(C)

Musical notation for section C, measures 1-4. Treble clef, G major key signature. Chords: G, G, C, G, D7, G.

(D)

Musical notation for section D, measures 1-4. Treble clef, G major key signature. Chords: am, G7, G, am, G7, D7.

13. Kineser manden

$\text{♩} = 177$
3:29



(A)



(B)



14. Hvor skal jeg gå hen?

$\downarrow = 170/155$
3:02

(A)

Handwritten musical notation for section A, first system. It consists of two staves. The top staff has a treble clef and a common time signature 'C'. The bottom staff has a bass clef. Chords 'C' and 'am' are written above the first two measures. The bottom staff includes a bracketed fingering sequence '1 | 1 | 2 |' over the final two measures.

(B)

Handwritten musical notation for section B, first system. It consists of two staves. The top staff has a treble clef and a common time signature 'C'. The bottom staff has a bass clef. Chords 'C', 'F', 'G7', and 'C' are written above the top staff. Chords 'am', 'dm', 'G7', and 'C' are written above the bottom staff.

(C)

Handwritten musical notation for section C, first system. It consists of three staves. The top staff has a treble clef and a common time signature 'C'. The middle staff has a treble clef. The bottom staff has a bass clef. Chords 'C', 'F', and 'C' are written above the top staff. Chords 'G' and 'G7' are written above the middle staff. Chords 'C' and 'G7' are written above the bottom staff.

15. Fri

$\text{♩} = 125$

3:24

(A)

Handwritten musical notation for section A, consisting of two staves. The first staff has a treble clef and a key signature of one flat. The second staff has a bass clef. Chords are written above the notes.

Chords: C, am, dm, G7, C, am, G2

Chords: C, am, F, G7, C, F, G7, C

(B)

Handwritten musical notation for section B, consisting of a single staff with a treble clef and a key signature of one flat.

(C)

Handwritten musical notation for section C, consisting of four staves. The first two staves have a treble clef and a key signature of one flat. The last two staves have a bass clef. Chords are written above the notes.

Chords: C, F, C

Chords: C, D7, G7

Chords: am, F, C

Chords: G7, dm, G7, C

16. Hvad skal der nu ske?

$\text{♩} = 155$
 $\text{♩} = 14$

(A)

(B)

(C)

17 - start på dagen

♩ = 145
3:20

Handwritten musical score for "17 - start på dagen". The score is divided into two sections, A and B, each consisting of four staves of music. The key signature is G major (one sharp) and the time signature is 4/4. The tempo is marked as quarter note = 145 and the duration is 3:20.

Section A:

- Staff 1: Chords A, A7, D, A
- Staff 2: Chords A7, E7
- Staff 3: Chords A, A7, D, A
- Staff 4: Chords D, A, E7, A

Section B:

- Staff 5: Chords A, D, A
- Staff 6: Chord E7
- Staff 7: Chords D, A
- Staff 8: Chords D, A, E7, A

18. Glæde

$\downarrow = 122$
3:23

(A)

Handwritten musical notation for section A, measures 1-4. The notation is on a single staff in treble clef. The notes are: C4, D4, E4, F4, G4, A4, B4, C5, B4, A4, G4, F4, E4, D4, C4. Chords are written above the staff: C, dm, G7, C.

(B)

Handwritten musical notation for section B, measures 1-4. The notation is on a single staff in treble clef. The notes are: C4, D4, E4, F4, G4, A4, B4, C5, B4, A4, G4, F4, E4, D4, C4. Chords are written above the staff: C, dm, F, C.

(C)

Handwritten musical notation for section C, measures 1-4. The notation is on a single staff in treble clef. The notes are: C4, D4, E4, F4, G4, A4, B4, C5, B4, A4, G4, F4, E4, D4, C4. Chords are written above the staff: C, dm, G7, C.

19. Klimate (1)

$\text{♩} = 160$
 $3:14$

(A)

E am E am

F C D7 G

(B)

(C)

19. - klismaet (2)

Handwritten musical score for "19. - klismaet (2)". The score consists of four staves of music. The first staff begins with a C chord. The second staff features chords E, am, D7, and G7. The third staff includes chords F, C, am, and F. The fourth staff contains chords G7 and C. A circled "D" is written to the left of the third staff.

20. Kurs stift

$\text{♩} = 125$

3:17

(A)



(B)



(C)



(D)



21. Dagligdag

$\text{♩} = 170$
3:18

(A)

Handwritten musical notation for section A, consisting of four staves. The first staff has a treble clef and a key signature of one flat. The notes are: C4, D4, E4, F4, G4, A4, B4, C5. Chords above are C, F, C, F, G7, F. The second staff has a bass clef and notes: G2, F2, E2, D2, C2, B1, A1, G1. Chords above are G7, F, C. The third staff has a treble clef and notes: C4, D4, E4, F4, G4, A4, B4, C5. Chords above are C, F, C, F, G7, F. The fourth staff has a bass clef and notes: G2, F2, E2, D2, C2, B1, A1, G1. Chords above are G7, dm, G7, C.

(B)

Handwritten musical notation for section B, consisting of four staves. The first staff has a treble clef and notes: C4, D4, E4, F4, G4, A4, B4, C5. Chord above is C. The second staff has a bass clef and notes: G2, F2, E2, D2, C2, B1, A1, G1. Chords above are F, G7. The third staff has a treble clef and notes: C4, D4, E4, F4, G4, A4, B4, C5. Chords above are C, F. The fourth staff has a bass clef and notes: G2, F2, E2, D2, C2, B1, A1, G1. Chords above are C, F.

(C)

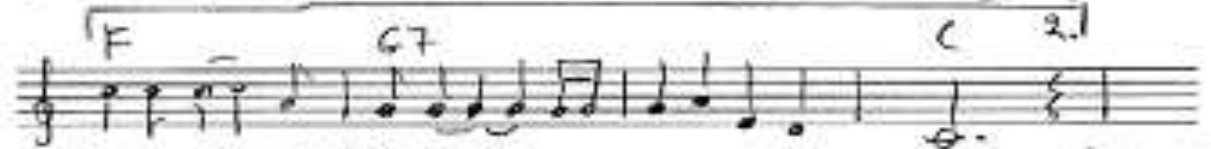
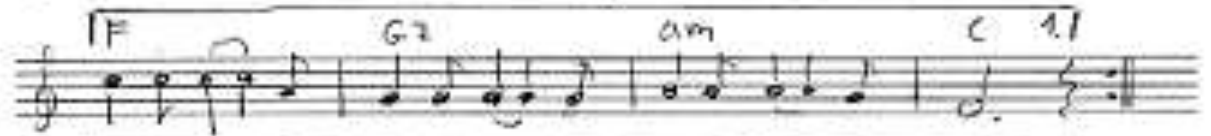
Handwritten musical notation for section C, consisting of two staves. The first staff has a treble clef and notes: C4, D4, E4, F4, G4, A4, B4, C5. Chord above is am. The second staff has a bass clef and notes: G2, F2, E2, D2, C2, B1, A1, G1.

22. Dommedag (1)

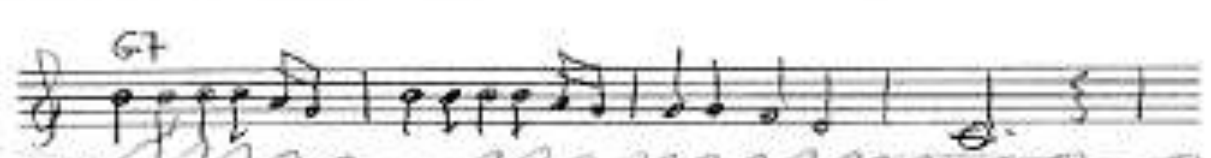
♩ = 180
3:25



(A)



(B)



(C)



2a Dommedag (2)

(D)

Handwritten musical notation for part D, consisting of two staves. The first staff has a treble clef and a key signature of one flat. It contains a melodic line with a chord 'am' written above the first measure. The second staff has a bass clef and contains a bass line with chords 'E' and 'am' written above it. There is a double bar line at the end of the second staff.

(E)

Handwritten musical notation for part E, consisting of one staff with a treble clef and a key signature of one flat. It contains a melodic line with chords 'G7' and 'am' written above it. The piece ends with a double bar line and repeat dots.

(F)

Handwritten musical notation for part F, consisting of one staff with a treble clef and a key signature of one flat. It contains a melodic line with chords 'C', 'am', and 'C' written above it.

Handwritten musical notation for part F, consisting of one staff with a treble clef and a key signature of one flat. It contains a melodic line with chords 'C', 'am', 'G7', and 'C' written above it.

23. Bliv ved

♩ = 165
3:09

(A)

Handwritten musical notation for system A, consisting of four staves. The first two staves are treble clef with a key signature of two sharps (F# and C#). The last two staves are bass clef. Chords E, A, and H7 are indicated above the staves.

(B)

Handwritten musical notation for system B, consisting of four staves. The first two staves are treble clef with a key signature of two sharps (F# and C#). The last two staves are bass clef. Chords A, H7, E, and A are indicated above the staves.

(C)

Handwritten musical notation for system C, consisting of two staves. The top staff is treble clef with a key signature of two sharps (F# and C#). The bottom staff is bass clef. Chords E, fm, B, Am, H7, and E are indicated above the staves.

(D)

Handwritten musical notation for system D, consisting of two staves. The top staff is treble clef with a key signature of two sharps (F# and C#). The bottom staff is bass clef. Chords E, H7, fm, and E are indicated above the staves. The word "HERE GANGE" is written in the top staff.

24. Destruktion

$\text{♩} = 150$
3:20

(A)

Handwritten musical score for section A, measures 1-4. It consists of four staves in G major, 3/4 time. The first staff has a treble clef and a key signature of one sharp (F#). The second staff has a bass clef. The third and fourth staves have a treble clef. Chords are indicated above the notes: A, E7, A, D, A, E, A7, D, E7, A.

(B)

Handwritten musical score for section B, measures 5-7. It consists of three staves in G major, 3/4 time. The first staff has a treble clef and a key signature of one sharp (F#). The second and third staves have a bass clef. Chords are indicated above the notes: A, A7, D, A, E7, A7, A.

25. Leverpostej

$\text{♩} = 112$

3:28

Handwritten musical score for "Leverpostej". The score is divided into two sections, A and B, each with two staves. Section A contains a melody line and a guitar accompaniment line. Section B contains two guitar accompaniment lines. Chords are written above the notes.

Section A:

- Staff 1 (Melody): Chords C, F, C, dm, Em, C.
- Staff 2 (Guitar): Chords F, dm, C, G7, dm, G7, C.
- Staff 3 (Guitar): Chords F, C, F, G7.
- Staff 4 (Guitar): Chords F, C, G7, C.

Section B:

- Staff 5 (Guitar): Chords F, G7, F, C.
- Staff 6 (Guitar): Chords G7, dm, G7, C.

26. Bryteholder

♩ = 170

3:25

(A)

Handwritten musical score for section A, consisting of four staves. The first staff has a treble clef, a key signature of one sharp (F#), and a common time signature (C). It starts with an E chord. The second staff has a treble clef, a key signature of one sharp, and a common time signature, with an A chord. The third staff has a treble clef, a key signature of one sharp, and a common time signature, with A7 and A chords. The fourth staff has a treble clef, a key signature of one sharp, and a common time signature, with an HT (harmonic tremolo) and an E chord.

(B)

Handwritten musical score for section B, consisting of three staves. The first staff has a treble clef, a key signature of one sharp, and a common time signature, with an E chord. The second staff has a treble clef, a key signature of one sharp, and a common time signature, with A and E chords. The third staff has a treble clef, a key signature of one sharp, and a common time signature, with an HT (harmonic tremolo) and an E chord.

27 Roselit min indre kvinde

♩ = 115
3:01

The image shows a handwritten musical score for guitar, titled "27 Roselit min indre kvinde". The tempo is marked as ♩ = 115 and the duration is 3:01. The score is divided into four systems, labeled A, B, C, and D, each containing two staves of music. Chord annotations are placed above the notes on the upper staff of each system.

- System A:** The first staff has chords E, A, E, A, E. The second staff has chords E, A, H7.
- System B:** The first staff has chords E, A, H7, E. The second staff has chords E, A, H7, G.
- System C:** The first staff has chords E, A, E, A, H7, A, E, H7. The second staff has chords E, A, E, A, H7, E, H7, E.
- System D:** The first staff has chords E, A, E, A. The second staff has chords E, A, H7.

28. Ad Helvete til

♩ = 100
3:14

(A)

C am dm G7 C am F G7

C am dm G7 C G7 C

(B)

C am dm G7

(C)

C am dm G7

C am dm G7

(D)

C

G7 1+2

D-SLUT

G7 SLUT

(E)

C Rit G

29. Fantasi

$\text{♩} = 115$
3:23

(A)

Handwritten musical score for section A. It consists of two systems of two staves each. The top staff is a guitar staff with a treble clef and a key signature of one sharp (F#). The bottom staff is a bass staff with a bass clef. The first system has chords E, f#m, and E. The second system has chords H7 and E. The music is written in a rhythmic style with eighth and sixteenth notes.

(B)

Handwritten musical score for section B. It consists of two systems of two staves each. The top staff is a guitar staff with a treble clef and a key signature of one sharp (F#). The bottom staff is a bass staff with a bass clef. The first system has chords E and A. The second system has chords H7 and E. The music is written in a rhythmic style with eighth and sixteenth notes.

(C)

Handwritten musical score for section C. It consists of two systems of two staves each. The top staff is a guitar staff with a treble clef and a key signature of one sharp (F#). The bottom staff is a bass staff with a bass clef. The first system has chords A and H7. The second system has chords A and E. The music is written in a rhythmic style with eighth and sixteenth notes.

30. Hverdags blues

$\text{♩} = 110$

3:23



A



B

